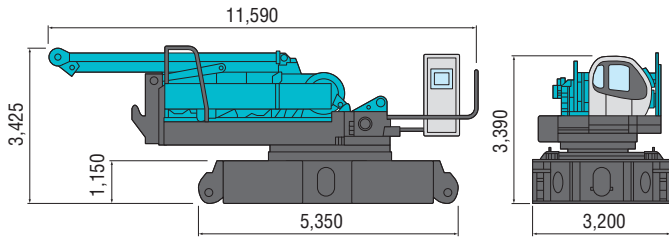


Transportation

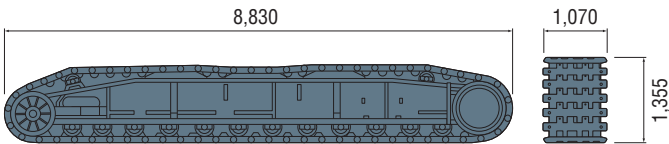
Base Machine and Carbody

35,900 kg
11,590 mm x 3,200 mm x 3,390 mm



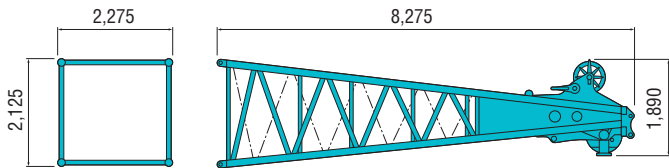
Crawlers

23,600 kg
8,830 mm x 1,070 mm x 1,355 mm



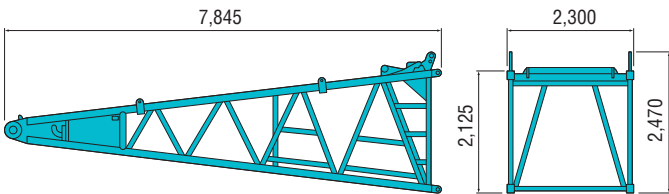
Heavy-duty Upper Boom

3,000 kg
8,275 mm x 2,275 mm x 2,125 mm



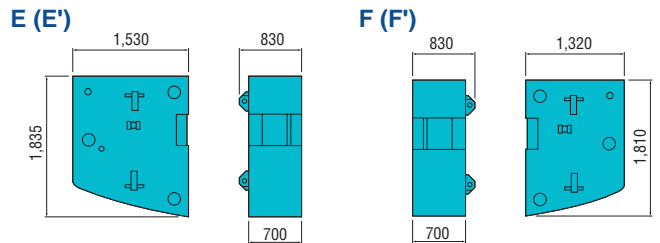
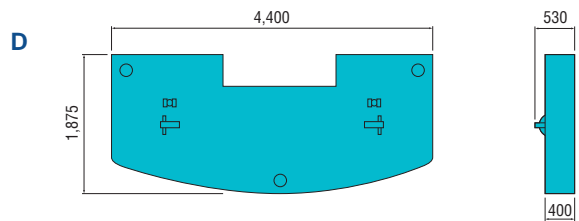
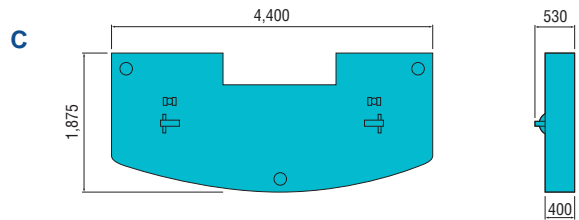
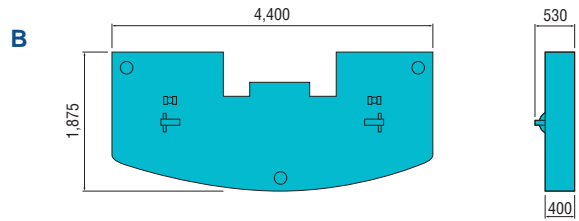
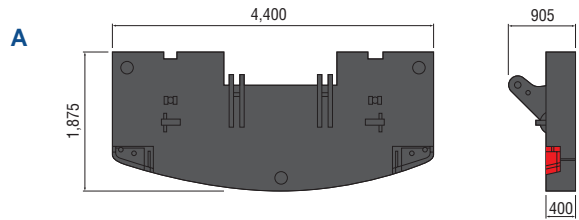
Lower Boom

2,430 kg
7,845 mm x 2,300 mm x 2,470 mm



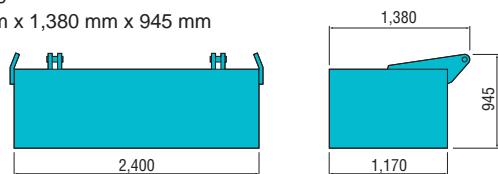
Counterweight

Total: 82,200 kg (13,500 kg + 12,500 kg x 3 + 8,400 kg x 2 + 7,200 kg x 2)
A: 4,400 mm x 905 mm x 1,875 mm **B:** 4,400 mm x 530 mm x 1,875 mm
C: 4,400 mm x 530 mm x 1,875 mm **D:** 4,400 mm x 530 mm x 1,875 mm
E (E'): 1,530 mm x 830 mm x 1,835 mm
F (F'): 1,530 mm x 830 mm x 1,810 mm



Carbody weight

10,000 kg x 2
2,400 mm x 1,380 mm x 945 mm



Other Attachment

Attachment	Weight	Dimensions (L x W x H)
3.0 m (10 ft) Insert Boom	610 kg	3,175 mm x 2,275 mm x 2,125 mm
6.1 m (20 ft) Insert Boom	1,030 kg	6,225 mm x 2,275 mm x 2,125 mm
9.1 m (30 ft) Insert Boom	1,450 kg	9,270 mm x 2,275 mm x 2,125 mm
9.1 m insert tower	1,750 kg	9,270 mm x 2,275 mm x 2,125 mm
Light-duty boom tip	2,100 kg	5,725 mm x 1,525 mm x 1,525 mm
5.4 (18 ft) m insert tapered boom	840 kg	5,570 mm x 2,275 mm x 2,125 mm
Upper tower Jib tip (Long boom tip)	990 kg	8,810 mm x 1,505 mm x 1,515 mm
Tower cap	2,100 kg	5,545 mm x 2,340 mm x 2,295 mm
Tower jib base	1,600 kg	10,380 mm x 2,335 mm x 1,525 mm
3.0 (10 ft) mid-point jib	320 kg	3,150 mm x 1,510 mm x 1,510 mm
3.0 m (10 ft) insert tower jib	320 kg	3,150 mm x 1,510 mm x 1,510 mm
6.1 m (20 ft) insert tower jib	535 kg	6,210 mm x 1,510 mm x 1,510 mm
9.1 m (30 ft) insert tower jib	755 kg	9,260 mm x 1,510 mm x 1,510 mm
Gantry	2,500 kg	6,110 mm x 1,760 mm x 820 mm
Tower strut	2,050 kg	7,410 mm x 2,380 mm x 1,125 mm
Upper spreader	635 kg	885 mm x 2,350 mm x 335 mm
Lower spreader	440 kg	855 mm x 1,500 mm x 320 mm
Upper spreader for tower jib	260 kg	1,020 mm x 245 mm x 765 mm
Lower spreader for tower jib	460 kg	2,275 mm x 690 mm x 835 mm
200-ton hook block	2,800 kg	700 mm x 995 mm x 2,225 mm
150-ton hook block	2,300 kg	700 mm x 715 mm x 2,665 mm
100-ton hook block	1,800 kg	700 mm x 555 mm x 2,025 mm
65-ton hook block	1,200 kg	700 mm x 385 mm x 1,815 mm
35-ton hook block	900 kg	700 mm x 365 mm x 1,575 mm
13.5-ton ball-hook	450 kg	1,200 mm x 380 mm dia.

General Dimensions

Unit: mm

